

Stabat Mater

Viola 1. Duetto "Stabat Mater dolorosa"

Giovanni Battista Pergolesi

Grave

First musical staff (measures 1-6) in Viola part. It begins with a whole rest in measure 1, followed by a series of half notes and quarter notes. A dynamic marking of *p* is placed below the first note.

7

Second musical staff (measures 7-11). It features a series of eighth notes and quarter notes. Dynamic markings include *f* at the start, *p* in measure 8, *p* in measure 9, and *f* in measure 10.

12

Third musical staff (measures 12-17). It contains a mix of half notes, quarter notes, and eighth notes. A dynamic marking of *p sempre* is placed below the first note.

18

Fourth musical staff (measures 18-21). It consists of a continuous eighth-note pattern.

22

Fifth musical staff (measures 22-26). It features a mix of quarter notes and eighth notes. Dynamic markings include *p dolce* at the start, *sotto voce* in measure 24, and *p* at the end.

27

Sixth musical staff (measures 27-31). It contains a mix of quarter notes and eighth notes. A dynamic marking of *pp* is placed below the first note.

32

Seventh musical staff (measures 32-37). It features a mix of half notes and quarter notes. Dynamic markings of *p* are placed below the first and last notes.

38

Eighth musical staff (measures 38-42). It contains a mix of quarter notes and eighth notes. Dynamic markings include *f* at the start and *p assai* in measure 40.

43

Ninth musical staff (measures 43-47). It features a mix of quarter notes and eighth notes. A dynamic marking of *sotto voce* is placed below the first note.

Viola

Stabat Mater

2. Aria "Cujus animam gementem"

Giovanni Battista Pergolesi

Andante amoroso

p *f* *p* *f* *pdolce*

13 *f* *p* *p*

24 *pp* *f* *p* *mf* *p* *mf*

36 *p* *mf* *p*

49 *mf* *p* *f*

60 *p* *f* *p* *p* *f* *p*

72 *mf* *f* *p*

83 *sotto voce* *f*

95 *p* *p* *f* *p*

106 *f* *p*

Viola

Stabat Mater

3. Duetto "O quam tristis et afflicta"

Giovanni Battista Pergolesi

Larghetto

Measures 1-5 of the Viola part. The music is in 2/4 time with a key signature of one flat. It begins with a piano (*p*) dynamic. The first measure contains a half note G4, a quarter note A4, and a quarter note B4. The second measure contains a quarter rest, a quarter note B4, and a quarter note C5. The third measure contains a quarter note C5, a quarter note D5, and a quarter note E5. The fourth measure contains a quarter note E5, a quarter note F5, and a quarter note G5. The fifth measure contains a quarter note G5, a quarter note F5, and a quarter note E5. A fermata is placed over the final G5.

Measures 6-10 of the Viola part. Measure 6 starts with a piano (*p*) dynamic. Measure 7 has a mezzo-forte (*mf*) dynamic. Measure 8 has a piano (*p*) dynamic. Measure 9 has a mezzo-forte (*mf*) dynamic. Measure 10 ends with a forte (*f*) dynamic. The music consists of eighth and sixteenth notes.

Measures 11-16 of the Viola part. Measure 11 starts with a piano (*p*) dynamic. Measure 12 has a forte (*f*) dynamic. Measure 13 has a piano (*p*) dynamic. Measure 14 has a forte (*f*) dynamic. Measure 15 has a piano (*p*) dynamic. Measure 16 ends with a piano (*p*) dynamic. The music features a mix of eighth and sixteenth notes.

Measures 17-21 of the Viola part. Measure 17 starts with a mezzo-forte (*mf*) dynamic. Measure 18 has a piano (*p*) dynamic. Measure 19 has a mezzo-forte (*mf*) dynamic. Measure 20 has a piano (*p*) dynamic. Measure 21 ends with a piano (*p*) dynamic. The music includes a long note in measure 17 and eighth notes in subsequent measures.

Measures 22-26 of the Viola part. Measure 22 starts with a forte (*f*) dynamic. Measure 23 has a piano (*p*) dynamic. Measure 24 has a pianissimo (*pp*) dynamic. Measure 25 has a forte (*f*) dynamic. Measure 26 ends with a piano (*p*) dynamic. The music features eighth and sixteenth notes.

Viola

Stabat Mater

4. Aria "Quae moerebat et dolebat"

Giovanni Battista Pergolesi

Allegro

9

18

27

38

49

60

71

82

93

100

Stabat Mater

5. Duet "Quis est homo"

Viola

(Duet)

Giovanni Battista Pergolesi

5

Largo

p

5

Largo

p *p*

10

Largo

p *p*

15

p

20

Allegro

pp

27

f *p* *cresc.*

35

f *p*

44

f *p* *pp*

Stabat Mater

6. "Vidit suum dulcem natum"

Viola

(Soprano Aria)

Giovanni Battista Pergolesi

à Tempo giusto

mp *p*

6 *f* *p* *p*

11 *dolce* *p* *assai e staccato*

16 *f* *p* *f*

21 *p*

25 *mf* *p* *f* *f*

30 *p* *sotto voce sempre*

36 *pp* *p*

41

Stabat Mater

7. Aria "Eja mater fons amoris"

Viola

Giovanni Battista Pergolesi

Andantino

Measures 1-10 of the Viola part. The music begins with a rest, followed by a series of eighth notes. Dynamics include *p* and *f*.

Measures 11-20. Measure 11 is marked with *f*. The piece continues with eighth notes and rests. Measure 20 ends with a fermata.

Measures 21-31. Measure 21 is marked with *p*. Measure 23 has a *pp* marking. The piece continues with eighth notes and rests. Measure 31 ends with a fermata.

Measures 32-42. Measure 32 is marked with *f*. The piece continues with eighth notes and rests. Measure 42 ends with a fermata.

Measures 43-53. Measure 43 is marked with *pp*. Measure 44 has a *f* marking. Measure 45 has a *p* marking. Measure 46 has a *f* marking. Measure 47 has a *p* marking. Measure 48 has a *f* marking. Measure 49 has a *p* marking. Measure 50 has a *f* marking. Measure 51 has a *p* marking. Measure 52 has a *f* marking. Measure 53 has a *p* marking. The piece continues with eighth notes and rests. Measure 53 ends with a fermata.

Measures 54-64. Measure 54 is marked with *f*. The piece continues with eighth notes and rests. Measure 64 ends with a fermata.

Measures 65-74. Measure 65 is marked with *p*. The piece continues with eighth notes and rests. Measure 74 ends with a fermata.

Measures 75-85. Measure 75 is marked with *f*. Measure 76 has a *p* marking. Measure 77 has a *f* marking. Measure 78 has a *p* marking. Measure 79 has a *f* marking. Measure 80 has a *p* marking. Measure 81 has a *f* marking. Measure 82 has a *p* marking. Measure 83 has a *f* marking. Measure 84 has a *p* marking. Measure 85 has a *f* marking. The piece continues with eighth notes and rests. Measure 85 ends with a fermata.

Measures 86-95. Measure 86 is marked with *mf*. Measure 87 has a *p* marking. Measure 88 has a *f* marking. Measure 89 has a *p* marking. Measure 90 has a *f* marking. Measure 91 has a *p* marking. Measure 92 has a *f* marking. Measure 93 has a *p* marking. Measure 94 has a *f* marking. Measure 95 has a *p* marking. The piece continues with eighth notes and rests. Measure 95 ends with a fermata.

Stabat Mater

8. "Fac ut ardeat cor meum"

Viola

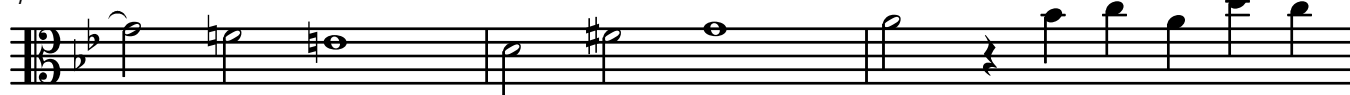
(Duet)

Giovanni Battista Pergolesi

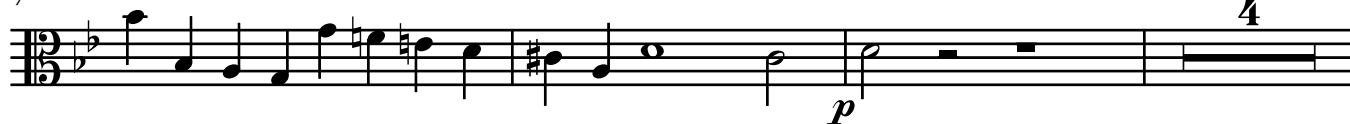
Allegro



4



7



14



17



21



25



29



32



36



40



43



46



50



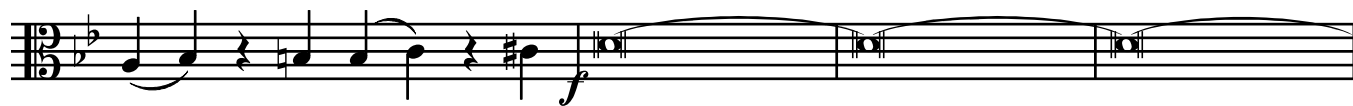
53



56



59



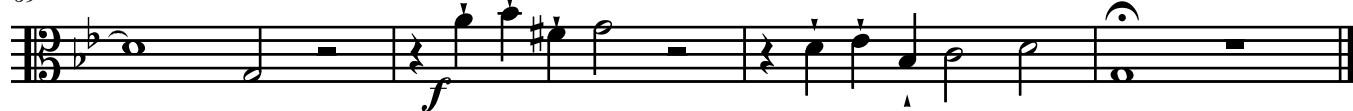
63



66



69



Stabat Mater

9. Duetto "Sancta Mater, istud agas"

Viola

Giovanni Battista Pergolesi

A tempo giusto

f

5 *f* *f* *p*

10 *f* *p*

14 *p*

18

22 *f*

26 *p*

30 *p*

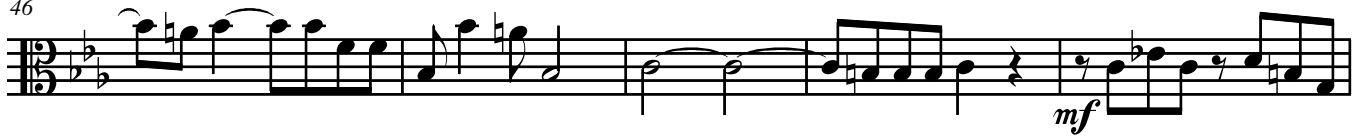
34 *p*

38 *f*

42



46



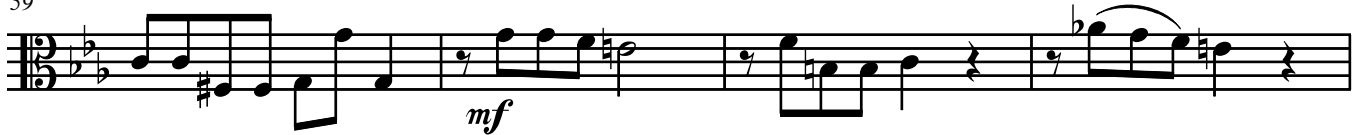
51



55



59



63



67



71



76



81



Stabat Mater

10. Aria "Fac ut portem Christi mortem"

Viola

Giovanni Battista Pergolesi

Largo

f *p* *f*

4

p *f* *p*

8

p assai *p*

11

p *f* *f* *mf*

16

p

20

mf *p* *pp* *p* *f*

24

Largo

p colle parte *f* a tempo *p* *f*

Stabat Mater

Viola

11. Duetto "Inflammatus et accensus"

Giovanni Battista Pergolesi

Allegro (m non troppo)

mf *p* *f* *p*

6 *f* *p* *pp* *f* *assai*

11 *p* *f* *p*

16 *mf* *p* *pp*

21 *mf* *p* *pp*

25 *f*

30 *p*

35 *p* *p*

40 *p dolce* *f*

45 *p* *f*

50 *p*

Stabat Mater

12. Duetto "Quando corpus morietur"

Viola

Giovanni Battista Pergolesi

Largo assai

dolce p sempre

5

pp p

9

13

17

21

25

pp sotto voce

Presto assai

29

12 *f*

46

3

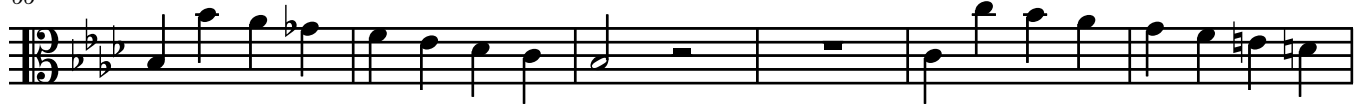
54



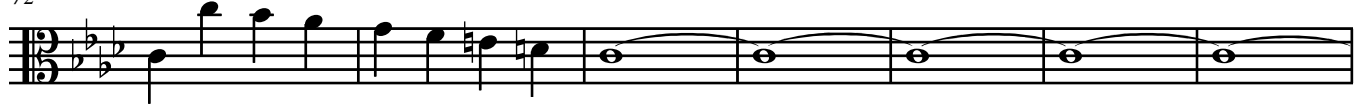
60



66



72



79



86



93



Finis
Laus Deo